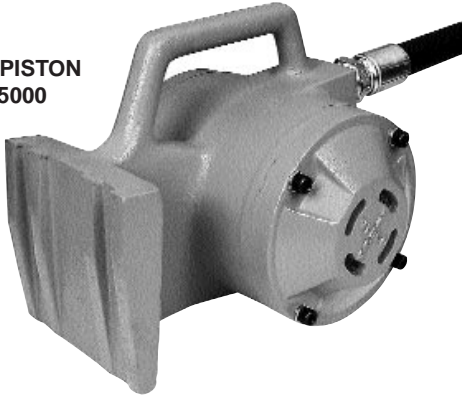


# Railroad Carshakers

ROTARY PISTON  
CCW-5000



ROTARY ROLLER  
SVRWS-5500,  
SVRWS-6500



## FEATURES:

- PORTABLE • POWERFUL • QUIET • RUGGED • RELIABLE
- QUICK MOUNT! Clamp-on or Wedge • SAFE • LOW COST
- LOW MAINTENANCE

## YOUR BEST CHOICE . . .

### ROTARY PISTON - CCW-5000

Your best choice of all pneumatic railroad carshakers. This patented unit developed by VIBCO accomplishes 3 vital functions:

1. It will empty the most stubborn materials.
2. It is silent, no more sound than an electric motor. (72-75 dB)
3. Low air consumption compared to other pneumatic units.

Other features are: No lubrication needed: Can easily be repaired by maintenance department.

### HIGH FREQUENCY AIR - SVRWS

Your second best choice for railroad carshakers, these units will move the most stubborn materials. The silent SVRWS (80-85 dB) with wedge head comes in 2 sizes, SVRWS-5500 and 6500.

Virtually no material can stand up to the high force and 10000 VPM (vibrations per minute) these units create.

The high frequency units can also be supplied with clamp-on brackets, SVRC-5500, 6500 & 8000.

For more information see Catalog #9126.

### PISTON AIR

Model 44 carshaker has wedge bracket to fit car's female Dove-tail receptacle. Available in powerful 3" bore sizes to help evacuate hopper cars quickly.

The lightweight, ease of portability, low cost and high forces of Model 44 carshaker has proven highly desirable for the small to medium consumer. See page 18 for technical data under 3" piston vibrators.

### BIG BUSTER

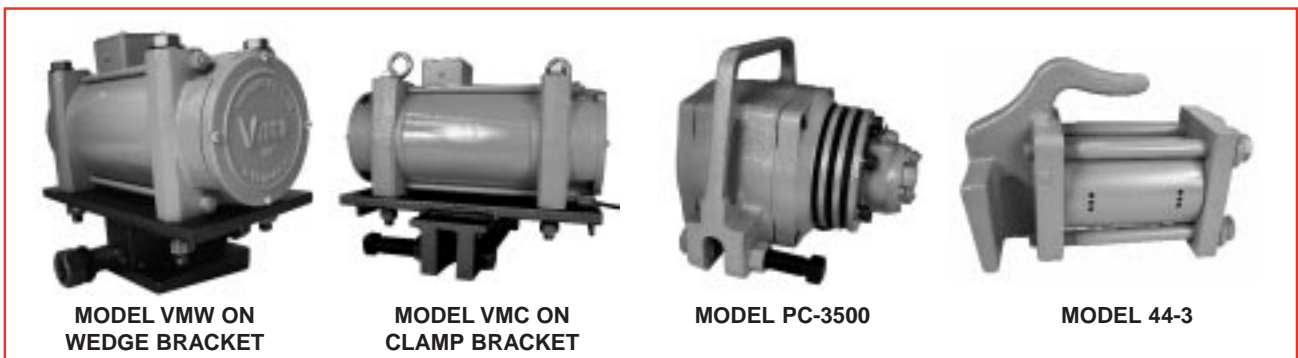
Big Buster carshakers provide high force at low frequency. The smaller units are supplied with wedge bracket PFW-1500, and with built-in clamp-on bracket as PC-3500 and PC-8000. For more information, see page 21 & 22.

### ELECTRIC

The VIBCO electric carshakers use the heavy duty line electric - 2P vibrators with their heavy duty reliability and performance. Single phase operation offered up to model 2P-800, three phase in all models. Wedge bracket to fit female receptacle on railroad car offered up to model 2P-800; clamp-on bracket available for all models. All models have overload protection and adjustable eccentrics providing flexibility to meet changes brought about by changes brought about by changes in density of car contents. See page 25-28 for technical data.



Ask for Catalog #9126



MODEL VMW ON  
WEDGE BRACKET

MODEL VMC ON  
CLAMP BRACKET

MODEL PC-3500

MODEL 44-3

# Unload Railroad Hopper Cars Faster & Cleaner with Less Labor . . .

## SIMPLE RULES FOR SELECTING YOUR CARSHAKER

MATERIAL IN R.R. CAR	
<b>GROUP 1</b>	Cement, flour, carbon black, bone black, aluminum shot.
<b>GROUP 2</b>	"After" Vibration (for cleaning car) Cement, sugar, flour, chemical salts (no moisture), corn grits, arsenic, barley hops, carbon black, borax, fluoride, gypsum, sodic sulphate, peanuts, sodium nitrate, semolina, tri-sodium phosphate and the like materials.
<b>GROUP 3</b>	Salts, molasses, iron ore, malt (if sticky) potash, bauxite, calcium carbide, crushed marble, and the like materials.
<b>GROUP 4</b>	Sand, stone, asphalt, stone dust, fly-ash, salt, coal, clay-lime-lumps, and the like materials.

### ELECTRICALLY OPERATED

Model	Consisting of		Electric* Power	Weight Lbs.	Used For Group	dB**
	Vibrator	Bracket*****				
VMC-450	2P-450***	Clamp-On	1 & 3 Phase	50	1	70
VMC-1000	4P-1000****	Clamp-On	1 & 3 Phase	52	1	70
VMW-450	2P-450	Wedge	1 & 3 Phase	48	1	70
VMW-700, 1000	4P-700, 4P-1000	Wedge	1 & 3 Phase	50	1	70
VMC-800	2P-800	Clamp-On	1 & 3 Phase	85	2	75
VMW-800	2P-800	Wedge	1 & 3 Phase	75	2	75
VMC-1700	2P-1700	Clamp-On	3 Phase	90	3	78
VMC-2500	2P-2500	Clamp-On	3 Phase	98	4	80

### AIR OPERATED

Model	Vibrator	Bracket	CFM/80 PSI	Lbs.	Group	dB**
CCW-5000	Rotary Piston	Wedge	35	48	1-2	72-75
44-3	3" Piston	Wedge	30	50	1-2	93-95
CCW-5000	Rotary Piston	Wedge	35	48	2-3	72-75
PFW-1500	PF-1500	Wedge	21	55	1-2	80-85
PFC-1500	PF-1500	Clamp-On	21	63	1-2	80-85
CCW-5000	Rotary Piston	Wedge	35	48	2-3	72-75
SVRWS-5500, 6500	High-Frequency	Wedge	50	48	2-3	78-85
44-4	3" L-Piston	Wedge	50	60	2-3	90-95
PC-3500	PC-3500	Clamp-On	39	70	2-3	80-85
SVRWS-5500 and 6500	SVRS-Silent High Frequency	Wedge	50	48	3-4	78-85
PC-3500	PC-3500	Clamp-On	39	51	3-4	80-85
SVRC-5500, 6500 and 8000	SVR-High Frequency	Clamp-On	55	58	3-4	93-95

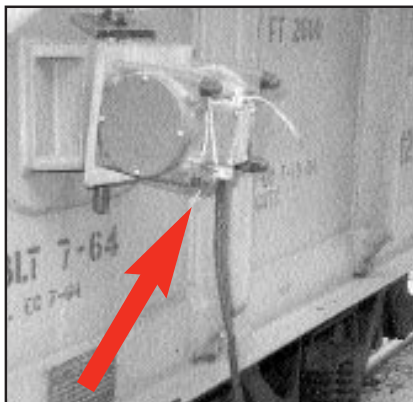
\*115 or 230 volt 1 phase; 230, 460, 575 volt 3 phase.

\*\*Decibel at 1 meter on A-scale.

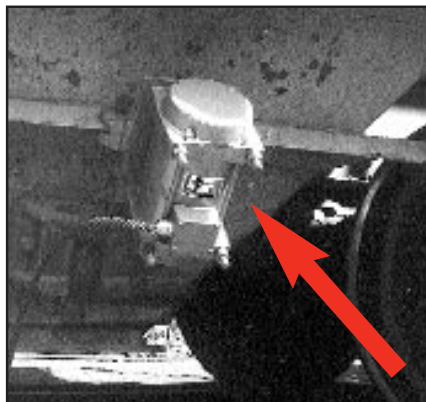
\*\*\*2P-450 for fine to granular materials

\*\*\*\*4P-1000 for lumpy or stringy materials

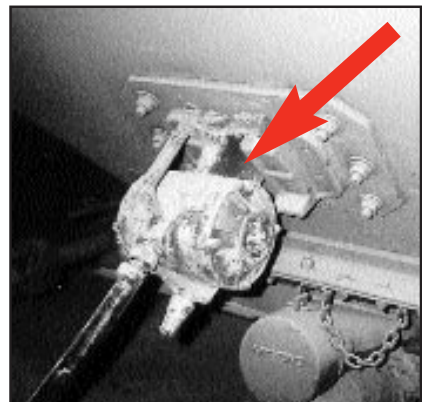
\*\*\*\*\*When possible use wedge bracket over clamp-on for better vibration transfer



VMW 450 in flour car wedge.



VMC-800 on hopper pocket.



CCW-5000 on railroad hopper car.