

# Portable Lug-Type Vibrators

## ELECTRIC HYDRAULIC PNEUMATIC



**USL-900 & -1600**



**2PL-900 & -1600**



**HL-3000**



**LC-1**



**SVRL & SVRLS  
-5500, -6500 &  
-8000**



**SVRLS  
-4000**



**CCL-5000**

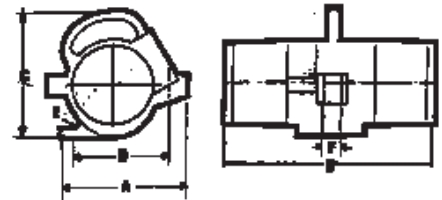


**LC-2**

Vibco's lug-type portable vibrator fits either the LC-1 or LC-2 lug bracket. They assure you of 100% vibration transfer and are an easy and inexpensive way to utilize one vibrator for many applications, from bin to bin, tote box to tote box, or concrete form to concrete form. Vibco offers a choice of electric, pneumatic, or hydraulic operation.

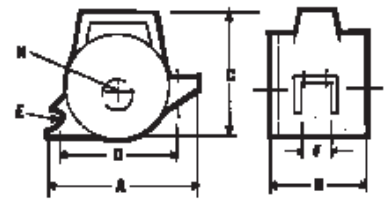
### TECHNICAL DATA

Electric Models	Phase	Amperes at Volt			H.P.	Force (Impact) lbs./N						Adjustable	dB**	Weight		RPM					
		1 phase				3 phase			Min.					Norm.			lbs.		kg.		
		115/230	230/460	575		115/230	230/460	575	lbs.	N	lbs.			N	lbs.		N	lbs.	N	lbs.	kg.
2PL-900	1 & 3	3/1.5	1/1.5	—	1/3	15	667	300	1335	450	2002	62	30	13.6	3600						
2PL-1600	1 & 3	5/2.5	1.2/6	—	1/2	110	489	450	2002	900	4004	64	48	21.8	3600						
USL-900	1	4.5/-	—	—	—	600	2669	900	4004	1100	4894	85	18	8.2	10000						
USL-1600	1	5.0/-	—	—	—	1100	4894	1600	7118	1800	8008	85	20	9.1	9000						



**2PL USL**

Pneumatic Models	Weight		80 PSI			90 PSI			100 PSI			CFM*	dB**
	lbs.	kg.	Force		Force		Force		Force				
	VPM*	lbs.	N	VPM*	lbs.	N	VPM*	lbs.	N	VPM*	lbs.		
SVRLS-4000	23	10.4	11500	3600	16000	12500	4000	17800	13500	4400	19500	40	78
SVRLS-5500	43	19.5	9000	4950	22000	10000	5500	24500	10500	6100	27100	54	78
SVRLS-6500	45	20.4	8800	5575	24800	9500	6500	28900	10000	7200	32000	58	80
SVRLS-8000	47	21.3	8500	7625	33900	8700	8000	35600	9500	9550	42500	62	82
SVRL-5500	37	16.8	9000	4950	22000	10800	5500	24500	10500	6100	27100	56	98
SVRL-6500	39	17.8	8800	5575	24800	9500	6500	28900	10000	7200	32000	60	98
SVRL-8000	41	18.6	8500	7625	33900	8700	8000	35600	9500	9550	42500	63	98



**SVRLS HL**

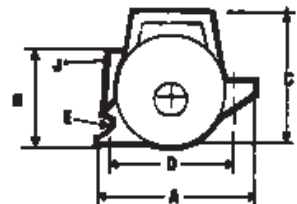
Hydraulic Models	Weight		Avg. PSI (max. 3000 PSI)	VPM*	GPM (max.)	Force		dB**
	lbs.	kg.				lbs.	N	
HL-3000	39	17.7	1000	5000	3.2	3400	15124	76

\*Frequency and air consumption will vary with load. \*\*dB a 3' (1 meter) on A scale N = Centrifugal force in Newton.

### DIMENSIONS

Model	A	B	C	D	E	F	H	J	K	Brackets
	inch/model	inch/model	inch/model	inch/model	inch/model	inch/model	inch/model	inch/model	inch/model	
2PL-900	7 178	12 305	7 178	5 1/2 140	1 25	—	—	—	1 1/16 27	LC-2
2PL-1600	9 1/2 241	11 1/8 279	8 1/8 225	6 3/8 168	1 25	1 1/16 27	—	—	—	LC-1
USL-900	7 1/2 191	11 279	7 1/4 184	4 3/4 121	3/4 19	7/8 22	—	—	—	LC-2
USL-1600	7 3/8 200	11 279	7 1/4 164	4 3/4 121	3/4 19	7/8 22	—	—	—	LC-2
SVRLS-4000	7 178	7 3/8 187	7 1/2 191	6 152	3/8 10	7/8 22	3/4 19	—	—	LC-2
SVRLS-5500, 6500 & 8000	9 1/2 241	8 1/16 205	9 1/4 235	7 3/4 197	1 25	1 1/4 32	3/4 19	—	—	LC-1
SVRL-5500, 6500 & 8000	9 1/2 241	6 1/8 156	9 1/4 235	7 3/4 197	1 25	1 1/4 32	3/4 19	—	—	LC-1
CCL-2000	7 178	8 1/16 205	7 1/4 164	5 1/8 151	3/4 19	3/4 19	4 1/8 105	3/4-NPT	7 3/4 197	LC-2
CCL-5000	9 3/8 238	8 3/8 219	8 3/8 219	8 203	1 25	1 1/4 32	5 1/4 133	1-NPT	8 1/2 216	LC-1
HL-3000	9 1/2 241	11 1/4 286	9 1/4 235	7 3/4 197	1 25	1 1/4 32	—	—	—	LC-1

Note: Dimensions and data subject to change without notice.



**CC**

